

SRP-350plusV

3-inch Thermal POS Printer



Retail



Restaurants
& Bars

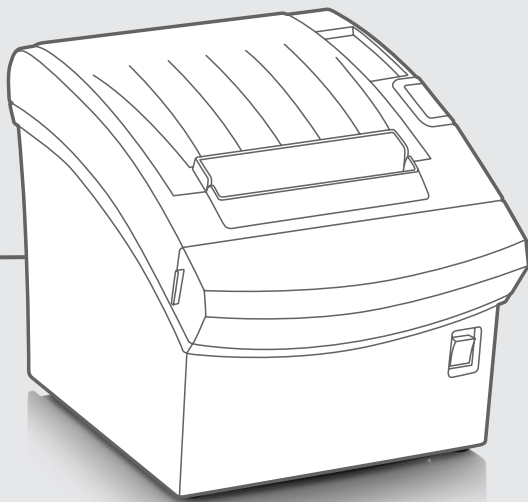


Lottery



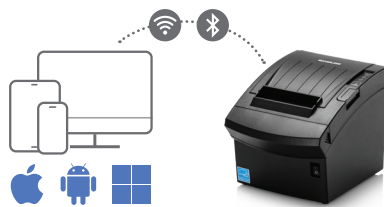
Hypermarket

Industry Leading Printing Solution



High-Quality Printing Performance

- Fast printing up to 400 mm/sec
- 16-shade grey scale printing of graphics
- Part of the world-class SRP-350 line
- Paper save mode supported



World-Class Flexibility

- Built-in USB and Ethernet
- Optional Serial, Parallel, WLAN, Bluetooth®, and Powered USB
- Compatible with major operating systems including iOS™, Android™, and Windows®
- SoftAP(Captive Portal), Simple Wi-Fi set up to a mobile device



User-Friendly Design

- Seamless switching to Blue4est® Paper, thanks to BIXOLON's Visibility Intelligence™
- Special designed for anti-jam guide
- Optional diverse printer accessories and B-melodist
- 180 dpi, 203 dpi options

SRP-350plusV

3-inch Thermal POS Printer

Specifications

Print Characteristics

Print Method

Direct Thermal

Print Speed

SRP-350plusV: Up to 400 mm/sec
SRP-352plusV: Up to 370 mm/sec

Print Resolution

SRP-350plusV: 180 dpi
SRP-352plusV: 203 dpi

Print Width

Up to 72 mm

Sensor

Paper End, Paper Near End, Cover Open, Visibility Intelligence Sensor

Media Characteristics

Media Type

Receipt

Media Width

80 mm
Optional 58 mm

Media Roll Diameter

Up to 83 mm

Media Thickness

0.05 ~ 0.08 mm

Supply Method

Easy Paper Loading

Physical Characteristics

Dimensions (W x D x H)

145 x 200 x 146 mm
(5.70 x 7.87 x 5.74 inch)

Weight

1.6 kg (3.52 lbs.)

Electrical

EnergyStar Certified,
External Power Adaptor 100-240 V AV, 50/60 Hz

Drawer Port

2 ports (Via y-type adaptor)

Performance Characteristics

Memory

64 Mb SDRAM, 64 Mb Flash

NV Image Memory

768 Kbytes (Mono)

Receive Buffer

4 Kbytes

User Define Buffer

12 Kbytes

Interface

Standard: USB V2.0 FS + Ethernet

Optional:

- ① USB V2.0 FS + Ethernet + Serial
- ② USB V2.0 FS + Ethernet + Dual Serial
- ③ USB V2.0 FS + Ethernet + Parallel
- ④ USB V2.0 FS + Ethernet + WLAN¹
- ⑤ USB V2.0 FS + Ethernet + Bluetooth
- ⑥ USB V2.0 FS + Ethernet + Powered USB

WLAN: 802.11a/b/g/n
(Infrastructure, Ad-hoc, Wi-Fi Direct, SoftAP)
WEP40/104, WPA1/2 (PSK, EAP)

Environment Characteristics

Temperature

Operating: 0 ~ 40 °C (32 ~ 104 °F)
Storage: -20 ~ 60 °C (-4 ~ 140 °F)

Humidity

Operating: 10 ~ 80 % RH
Storage: 10 ~ 90 % RH

Software

Emulation

BXL / POS

Driver / Utility

Windows Driver
OPOS/JPOS Driver
Linux/Mac CUPS Driver
Virtual COM USB/Ethernet Driver
Utility Program
Network Auto Installer

SDK / Plugin

Android/iOS/Windows SDK
Linux SDK
Xamarin SDK
Web Print SDK
Cordova Plugin

Application

mPrint App (Android, iOS)

MDM (Optional)

BIXOLON Profile Manager
- XPM™, XCM™ (Windows, Android)

Fonts / Graphics / Symbologies

Character Size

Font A: 12 x 24, Font B: 9 x 17, Font C: 9 x 24,
KOR, CHN, JPN: 24 x 24

Characters Per Line

SRP-350plusV: Font A: 42, Font B, C: 56,
KOR, CHN, JPN: 21

SRP-352plusV: Font A: 48 Font B, C: 64
KOR, CHN, JPN: 24

Character Sets

Alphanumeric: 95
Extended Graphics: 128 x 35 page
International: 32

Graphics

Supporting user-defined fonts, graphics,
formats, and logos

Barcode Symbologies

1D: Coda Bar, Code 39, Code 93, Code 128,
EAN-8, EAN-13, ITF, UPC-A, UPC-E

2D: Data Matrix, PDF417, QR code

Accessories

Standard

RJ12 6pin cable Adapter (Male to Female),
USB A-B Cable 1.8 m

Optional

Built-in SMPS, Vertical stand, Wall mount,
Splash Proof Cover, External buzzer, B-Melodist,
Powered USB (0.5/1.2 m),
Serial Cable (9-9/25-9 pin), Parallel Cable

