



Label software cablabel **S3**

Made by cab



*Our head office in Karlsruhe, Germany*

cab Produkttechnik GmbH & Co. KG  
P.O. Box 1904  
76007 Karlsruhe/Germany  
Wilhelm-Schickard-Str. 14  
76131 Karlsruhe/Germany  
Phone +49 721 6626-0  
Fax +49 721 6626-249  
[www.cab.de/en](http://www.cab.de/en)  
[info@cab.de](mailto:info@cab.de)

# Content

cablabel® S3 . . . . .	4
Supported functions . . . . .	6
Products . . . . .	7
Technical data . . . . .	8
Additional tools. . . . .	9
Printer drivers . . . . .	9
cab delivery program. . . . .	10



All information on scopes of delivery, design and technical specifications correspond to the date of the printing. Subject to change. The data provided in the catalog do not represent any warranty or guarantee.

For current data see website  
[www.cab.de/en/cablabel](http://www.cab.de/en/cablabel)

# cablabel<sup>S3</sup>



cablabel<sup>®</sup> S3 is a label software, which integrates three functions:

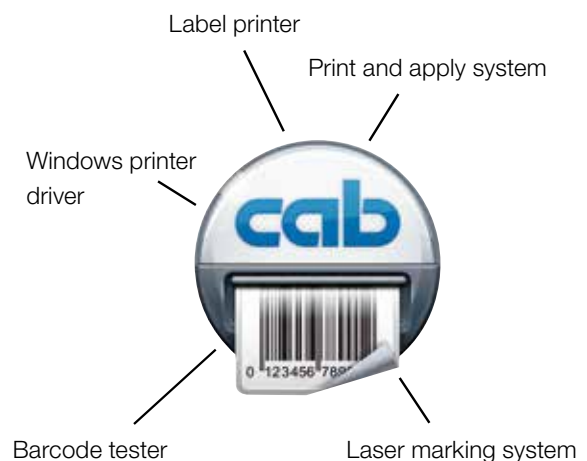
- **design**
- **printing**
- **monitoring**

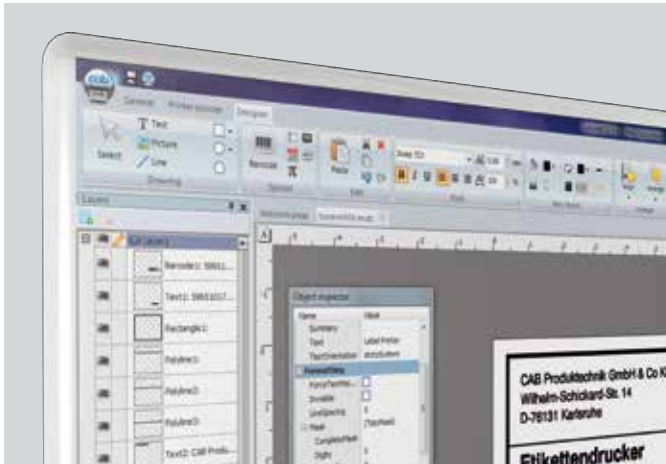
The software, which was developed by cab, opens the full potential of cab devices during design: An extensive instruction set is available in the intuitive user interface, e. g. different date formats, mathematic or logic functions.

At the same time cablabel<sup>®</sup> S3 connects all cab marking systems: First you design the label. You decide not until printing whether you want to print on a label printer, a print and apply system or a laser marking system.

Do you want your marking system to print independently of a host system, in the stand alone mode? cablabel<sup>®</sup> S3 supports you here again: after design the software supplies you with the required data which are stored within the printer for stand alone mode.

cablabel<sup>®</sup> S3 is of modular design and can be adapted step by step to your requirements: elements like the JScript editor are embedded as plug-in in order to support native programming with JScript. If you change the label in the designer user interface, the display in the JScript viewer is aligned in real time. Special functions like Database Connector or bar code tester can be integrated easily.



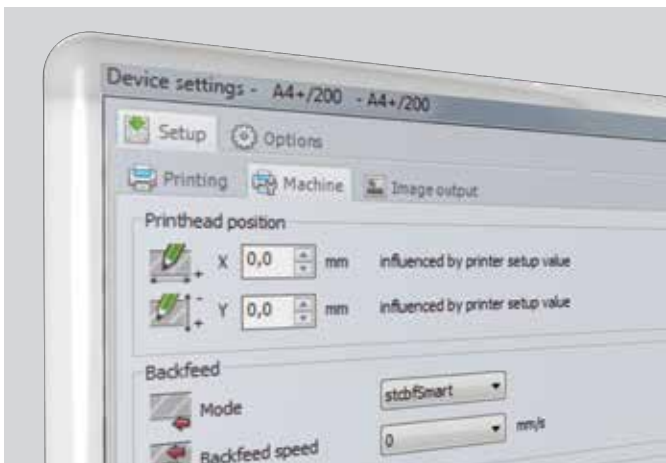


### Designer

In the designer you create the label. The view in the designer corresponds to the print on the label (WYSIWYG, What you see is what you get). You compose text, graphics or bar codes. You insert variable data by functions like date fields, counter or database connections. You adopt the label on your print demands by editing formulas, string formatting or logic commands.

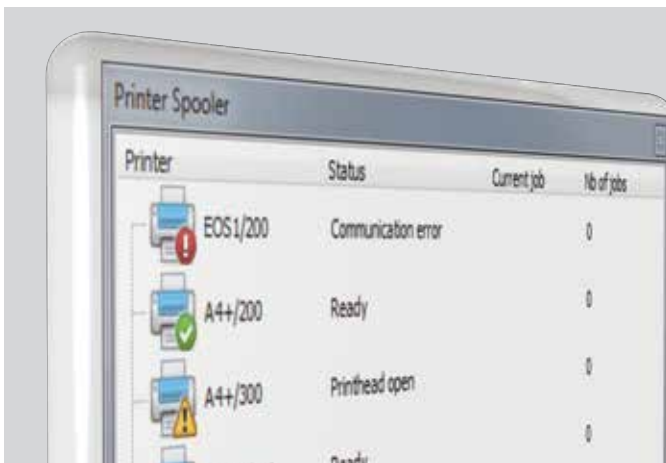
The layer technology allows you for example to manage a label for an output on printers with different resolutions: You insert a bar code to several layers and every layer has an assigned resolution. This way, the bar code is automatically printed in the correct resolution.

You activate or deactivate the layer by a simple click!



### Hardware management

You install the required printer drivers or adopt the adjustment and communication of enclosed devices with the hardware management.



### Printer Spooler

The printer spooler indicates the status of all printers, enables printer monitoring and stores interrupted print jobs. New print jobs are automatically added to the waiting queue.

# Supported functions

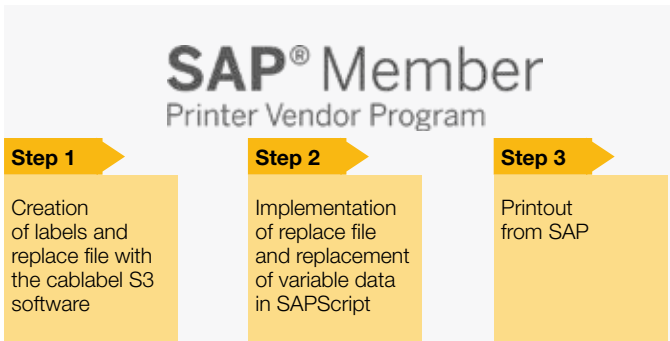
cablabel® S3 unites functions like native programming and data base connections optimally.

J	Job Start
H 100	Speed (100 mm / s)
O R	Orientation rotated by 180°
S I1;0,0,68,70,100	Size of label (100x68 mm, gap 2 mm)
T 10, 10,0,5,pt20;sample	Text object/font: Swiss bold, 20 pt
B 10,20,0,EAN-13,SC2,401234512345	Barcode EAN 13; size SC 2
G 8,3,5,0;R:30,9,0,3;0,3	Graphic, box 30 x 9 mm, Line weight 0,3 mm
A 1	Number of labels (in this example 1)



## Direct programming with JScript

Every cab printer can be directly coded with the simple programming language JScript. cablabel® S3 supports this by import/export functions of native JScript files.



## Replace files and integration in SAP R/3\*

In cooperation with SAP, cab developed the replace method in order to control the cab printers with SAPScript from SAP R/3. As a Silver Level partner in SAP's Printer Vendor Program, cab has access to the SAP development area for optimum printer support in SAP environments. With the replace method the host computer only sends the data which has to be changed in JScript. cablabel® S3 provides the necessary replace files in combination with the label layout in of software.

\* SAP and all SAP logos are trademarks or registered trademarks of SAP SE in Germany and in several other countries.

```

abc - Notepad
File Edit Format View Help
<ABC>
label start
input a$
if left$(a$,15)="194300301480070" then
  print "R t2;",mid$(a$,16)
endif
if left$(a$,15)="194300300580172" then
  print "R t3;",mid$(a$,16)
endif
if left$(a$,15)="194300301970073" then
  print "R t1;",mid$(a$,16)
endif
if a$0"Q0001" then
  print "A 1"
endif
goto start
  
```



## abc BASIC Compiler

As an integrated element of the firmware, the Basic Compiler enables the printer to process data via BASIC programming before it is sent for print editing. That way, you replace external printer languages or integrate data from other systems, e.g. balance or a PLC.

With cablabel® S3 you integrate the required program code easily when creating the label.



## Database Connector

This program allows the printer with an additional network connection to interrogate directly a central ODBC-/OLEDB-capable database and to print the data in the label. Simultaneously the printer may write back data to the database while printing. By integration of the Database Connector in cablabel® S3 you establish conveniently the data base connections while creating the label.

# Products



Companies structure the label printing differently. For example creation and production are executed by different employees. To adopt the software package to your company cab offers different products.

## Lite

cablabel® S3 Lite is delivered free of costs with every cab printer and allows you to create and print simple labels.

## Pro

With cablabel® S3 Pro you create label designs for professional industrial sector and develop solutions for your label printing.

## Print

cablabel® S3 Print is provided for users in production or warehouse. The user interface is simplified and makes only those functions available which are required for label print: You select the label in a list and get the layout for visual control. Then you enter the variable information and the amount you want to print. This simplifies your work and reduces possible sources of error.

## Demo

cablabel® S3 Demo enables interested users to install and to test the software for free. All functions of the Pro-product are available, except the JScript viewer and the support for stand alone mode. Printing is also possible, but limited only for testing. The use is limited during 30 days and for one activation.

## Pro Laser\* und Print Laser\*

With the laser products you get the function volume according to the Pro product respectively the Print product and additionally the possibility to release content on a laser marking system.

## Print Server\*

You automate the print processes for the control by external applications like an ERP system via web services (SOAP interface) or file interface (XML, CSV, ASCII) with cablabel® S3 Print Server.

With this product you integrate cab marking systems in your process chain in order to print up-to-date data like measurement or test results in labels.

## Viewer

cablabel® S3 Viewer shows the preview of a label in the Windows Explorer. The Viewer may support you for example in approval processes or supplier requirements. The product is delivered free of costs with every cablabel® S3.

\* in preparation

# Technical data

Versions	Lite	Pro	Print	Print Server <sup>(1)</sup>
<b>General functions</b>				
Languages: CS, DE, EN, FR, ES, IT, KO, PL, ZH	■	■	■	■
Creating labels	■	■		
Printing labels	■	■	■	■
JScript code viewer		■		
Unicode support	■	■	■	■
cab labels formats	■	■		
Graphic import	Raster (bmp, jpg, tif...)	■	■	
	Vector (plt, dxf)		■	
Color support	■	■	■	■
Layers management	■	■		
TrueType fonts	■	■	■	■
Linear and 2D barcodes	■ <sup>(2)</sup>	■	■	■
True WYSIWYG	■	■	■	■
Wizard-based user interface	■	■		
Laser devices support		■ <sup>(3)</sup>	■ <sup>(3)</sup>	
GS1 barcode wizard (UCC/EAN 128)		■		
Text alignment	■	■		
Background image or color	■	■	■	■
	Prompt fields free	■	■	■
	with display mask	■	■	■
ABC basic compiler support		■		
ABC code library		■		
Date and time including offsets		■	■	
Counter	basic	■	■	■
	advanced		■	■
Variable graphics		■		
Decimals formatting		■		
Multiline, paragraph	■	■	■	■
Text box with various markups (e.g. for highlighting allergens)		■	■	■
View and control of the printer display <sup>(4)</sup>	■	■	■	■
<b>Database functions</b>				
OLEDB, ODBC, ASCII		■	■ <sup>(5)</sup>	■ <sup>(5)</sup>
Database Connector		■		
Query editor		■		
Multiple tables and databases		■	■ <sup>(5)</sup>	■ <sup>(5)</sup>
<b>Import/export functions</b>				
Print to file	■	■		
Export to graphic		■		
Export to PDF		■		
Import of JScript files		■		
<b>Printing functions</b>				
Interfaces: serial, parallel, USB, Ethernet, WLAN	■	■	■	■
Number of native cab printers	un-limited	un-limited	un-limited	<sup>(6)</sup>
Printer spooler	■	■	■	■
Bidirectional communication	■	■	■	■
Standalone mode	■	■	■	■
Network printer (TCP/IP)	■	■	■	■
Windows printer		■	■	■

<sup>(1)</sup> In preparation

<sup>(2)</sup> Except barcodes with assistant

<sup>(3)</sup> Specific version

<sup>(4)</sup> Depending on printer model and used port

<sup>(5)</sup> Run queries only

<sup>(6)</sup> Depending on license

## cablabel® S3

System requirements:

- PC with 2 GHz Processor or higher
  - 1 GB of free RAM (depending on the system)
  - 500 MB of free hard disk space
  - 32/64 bit operating system Microsoft® Windows® XP
 

Windows Vista	Windows Server 2008
Windows 7	Windows Server 2008 R2
Windows 8	Windows Server 2012
Windows 8.1	Windows Server 2012 R2
Windows 10	Windows Server 2016
- Terminalserver/Citrix are not supported.
- Administrator rights on PC during installation and activation

## Products

Art. No.	Designation	License
5588000	cablabel® S3 Lite	gratis
5588009	cablabel® S3 Demo	gratis
5588001 5588100 5588101 5588150 5588151 5588152	cablabel® S3 Pro 1 WS cablabel® S3 Pro 5 WS cablabel® S3 Pro 10 WS cablabel® S3 Pro 1 additional licence cablabel® S3 Pro 4 additional licences cablabel® S3 Pro 9 additional licences	softkey
5588002 5588105 5588106 5588155 5588156 5588157	cablabel® S3 Print 1 WS cablabel® S3 Print 5 WS cablabel® S3 Print 10 WS cablabel® S3 Print 1 additional licence cablabel® S3 Print 4 additional licences cablabel® S3 Print 9 additional licences	softkey
In preparation	cablabel® S3 Print Server	softkey
In preparation	cablabel® S3 Pro Laser cablabel® S3 Print Laser	softkey

## Database Connector

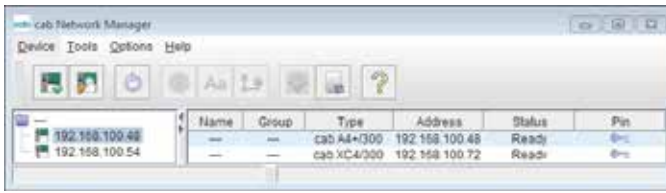
System requirements:

- PC with 2 GHz Processor or higher
- 1 GB of free RAM (depending on the system)
- 200 MB of free hard disk space
- 32/64 bit operating system Microsoft® Windows® XP
 

Windows Vista	Windows Server 2008
Windows 7	Windows Server 2008 R2
Windows 8	Windows Server 2012
Windows 8.1	Windows Server 2012 R2
Windows 10	Windows Server 2016
- Supported data bases: MS ACCESS, MS SQLServer, Oracle, Dbase and ODBC connections
- Printer with X2 main board or higher



# Additional tools



## Administration Network Manager

The cab Network Manager enables you to control multiple printers across a network simultaneously. It supports monitoring, configuration, firmware updates, memory card administration, file synchronization and PIN administration centrally.

System requirements:

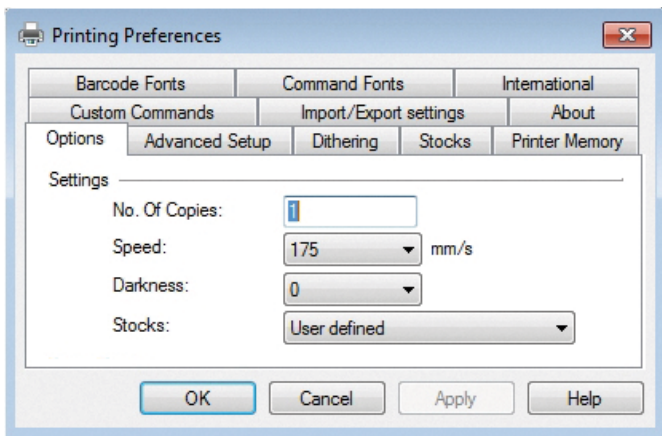
32/64 bit Microsoft® Windows®

Windows Vista    Windows Server 2008

Windows 7        Windows Server 2008 R2

Art. No.	Designation	License
5580215	Administration Network Manager	gratis

# Printer drivers



## WHQL certified Windows printer drivers 32/64 bit

Our printer drivers are officially accredited and signed by Microsoft. They offer highest stability on your Windows operating system. The drivers are delivered with your printer and comply with

Windows Vista    Windows Server 2008

Windows 7        Windows Server 2008 R2

Windows 8        Windows Server 2012

Windows 8.1      Windows Server 2012 r2

Windows 10      Windows Server 2016

*Microsoft® is a registered trademark of Microsoft Corporation.*



## Apple Mac OS X® driver<sup>1)</sup>

We also offer a CUPS based printer driver for programs using Mac OS X (version 10.6 or newer). For download at [www.cab.de/en](http://www.cab.de/en)

*Mac OS® is a registered trademark of Apple Computer, Inc.*



## Linux driver 32/64 bit<sup>1)</sup>

We also offer a CUPS based printer driver (version 1.2 or newer) for programs using Linux. For download at [www.cab.de/en](http://www.cab.de/en)

<sup>1)</sup> Only with printer series A+ (with the exception of A4+T), EOS, MACH4, Hermes+, PX and SQUIX.

# Product overview

**Label printers MACH1, MACH2**  
in the lower price segment



**Label printers MACH 4S**  
where little space is available



**Label printers EOS2**  
Desktop device for label rolls  
up to diameter 152 mm



**Label printers EOS5**  
Desktop device for label rolls  
up to diameter 203 mm



**Label printers SQUIX 2**  
Industrial device for print widths  
up to 57 mm



**Label printers SQUIX 4**  
Industrial device for print widths  
up to 108 mm



**Label printers SQUIX 6**  
Industrial device for print widths  
up to 168 mm



**Label printers A8+**  
Industrial device for print widths  
up to 216 mm



**Label printers XD4T**  
for double-sided printing



**Label printers XC**  
for two-color printing



**Print and apply systems Hermes+**  
for automation



**Print and apply systems Hermes C**  
for two-color printing and applying



**Print modules PX**  
to be integrated in labeling machines



**Labels**  
made from more than 400 materials



**Ribbons**  
in wax, resin and resin/wax qualities



**Label software cablabel S3**  
Design, print, control



**Label dispensers HS, VS**  
for horizontal or vertical dispense



**Labeling heads IXOR**  
to be integrated in labeling machines




**Marking lasers FL+**  
with output powers 10 to 50 Watt



**Laser marking systems XENO 1**  
for single workpieces and series



 Headquarters and fabrication in Germany

 to  International subsidiaries

There are further 820 distribution partners in more than 80 countries.



## Europe

### Germany

cab Produkttechnik GmbH & Co KG  
Wilhelm-Schickard-Str. 14  
76131 Karlsruhe  
phone +49 721 6626 0  
fax +49 721 6626 129  
[info@cab.de](mailto:info@cab.de)  
[www.cab.de](http://www.cab.de)

### France

cab Technologies S.à.r.l.  
2a Rue de la Moder  
Z.A. Nord du Val de Moder  
67350 Niedermodern  
phone +33 388 722501  
fax +33 388 722502  
[info.fr@cab.de](mailto:info.fr@cab.de)  
[www.cab.de/fr](http://www.cab.de/fr)

## America

### USA

cab Technology, Inc.  
21 Alpha Road, Suite 200  
Chelmsford, MA 01824  
phone +1 978 250 8321  
fax +1 978 256 9564  
[info.us@cab.de](mailto:info.us@cab.de)  
[www.cab.de/us](http://www.cab.de/us)

### Latin America

Alejandro Balmaceda  
Hacienda Jurica Pte 1615  
Colonial de Valle  
32553 Juárez, Mexico  
phone +52 656 682 4301  
[a.balmaceda@cab.de](mailto:a.balmaceda@cab.de)  
[www.cab.de/es](http://www.cab.de/es)

## Asia

### Taiwan

cab Technology Co., Ltd.  
希愛比科技股份有限公司  
16F-1, No. 700, Jhong Jheng Rd  
Junghe, Taipei 23552  
phone +886 (02) 8227 3966  
fax +886 (02) 8227 3566  
[info.asia@cab.de](mailto:info.asia@cab.de)  
[www.cab.de/tw](http://www.cab.de/tw)

### China

cab (Shanghai) Trading Co., Ltd.  
铠博(上海)贸易有限公司  
A507, No. 268, Tong Xie Rd  
Shanghai 200335  
phone +86 (021) 6236 3161  
fax +86 (021) 6236 3162  
[info.cn@cab.de](mailto:info.cn@cab.de)  
[www.cab.de/cn](http://www.cab.de/cn)

cab (Shanghai) Trading Co., Ltd.  
铠博(上海)贸易有限公司  
Room 39, 10F, 8 Lin He Zhong Rd  
Tian He District, Guangzhou 510610  
phone +86 (020) 2831 7358  
[info.cn@cab.de](mailto:info.cn@cab.de)  
[www.cab.de/cn](http://www.cab.de/cn)

## Africa

### South Africa

cab Technology (Pty) Ltd.  
8 Fabriek Street  
Strijdom Park  
Randburg 2169  
phone +27 11 886 3580  
fax +27 11 789 3913  
[info.za@cab.de](mailto:info.za@cab.de)  
[www.cab.de/za](http://www.cab.de/za)