

POWERSCAN™ 9600 RFID SERIES

Improving traceability and productivity with RFID technology



HYBRID RFID AND BARCODES SCANNING TECHNOLOGIES

The PowerScan 9600 RFID Series consists of hybrid solutions to scan both UHF RFID tags and printed barcodes, supporting businesses that utilize any identification technology. The product is to be used in different industries, such as Retail, T&L, Manufacturing, and Healthcare, improving productivity and inventory visibility thanks to the benefits of RFID technology.

ULTRA-RUGGED WITH BALANCED ERGONOMICS

With an ultra-rugged design, the PowerScan 9600 family is built to survive the harshest environmental conditions. To lessen operator stress during daily tasks, the PowerScan 9600 imagers feature an ergonomic shape and a well-balanced weight.

WIRELESS CHARGING

The PowerScan 9600 RFID series include Datalogic's Wireless Charging technology. Based on inductive-charging technology, Datalogic's Wireless Charging System eliminates battery connections and pins, which are frequently dirty, deformed, or broken over time, removing a critical point of failure for devices used in industrial and retail applications.

EASY SYSTEM INTEGRATION

The BC9600 base/charger has a modular design and is available with multiple interface plug-ins for standard and industrial communications such as RS-232, USB, Standard Ethernet and Industrial Ethernet protocols.

FEATURES

- UHF RFID tags reading and writing capabilities, in addition to scanning of 1D, stacked, 2D codes, postal codes, OCR, and image capture
- Cordless model with Bluetooth 5.0 connectivity
- Water and Particulate Sealing Rating: IP65 and IP67; Cradle IP65; 10 million hits trigger
- Center of gravity design
- Modular cradle design allowing interface expansion
- Datalogic's 3GL™ (3 Green Lights) technology and loud beeper for good-read feedback
- Datalogic's Motionix™ motion-sensing technology
- Wireless Charging reducing total cost of ownership
- EASEOFCARE Service Plans offer a wide range of service options to protect your investment, ensuring maximum productivity and ROI

INDUSTRIES - APPLICATIONS

Retail

- Checkout
- Self-checkout
- Inventory Management

T&L

- Receiving/Picking
- Inbound/Outbound
- Order Fulfilment
- Warehousing

Manufacturing

- Work in Progress (WIP)
- Traceability
- Quality Control

Healthcare

- Inventory Management
- Traceability
- Validation



POWERSCAN 9600 RFID SERIES

TECHNICAL SPECIFICATIONS

WIRELESS COMMUNICATIONS	
Powerscan PBT9600 RFID	Bluetooth Wireless Technology Radio Frequency: 2.4 GHz; Profiles: SPP (Serial Port Profile) and HID (Human Interface Device); Protocol: Bluetooth 5.0 Certified. Class 1, Class 2 and Class 3; Radio Range (Open Air): 100.0 m / 328.0 ft; Range distances are measured using the base station. Data Rate: 3 Mbit/s (2.1 Mbit/s). Security: Data Encryption; Scanner Authentication
RFID	
Standard	EPC UHF Class 1 Gen 2 (ISO 18000-6C)
Frequency	US: 902 MHz to 928 MHz EU: 865 MHz to 868 MHz
Modulation	ASK
Power	Max 20dBm (configurable)
Reading Range	Up to 1 m / 3.2 ft (linear)
DECODING CAPABILITY	
1D / Linear Codes	Auto discriminates all standard 1D codes including GS1 DataBar™ linear codes.
2D Codes	Aztec Code; China Han Xin Code; Data Matrix; MaxiCode; Micro QR Code; QR Code; Dot Code
Postal Codes	Australian Post; British Post; China Post; IMB; Japanese Post; KIX Post; Planet Code; Postnet; Royal Mail Code (RM4SCC)
Stacked Codes	EAN/JAN Composites; GS1 DataBar Composites; GS1 DataBar Expanded Stacked; GS1 DataBar Stacked; GS1 DataBar Stacked Omnidirectional; MacroPDF; MicroPDF417; PDF417; UPC A/E Composites
Digital Watermarking	Digimarc Barcodes
ELECTRICAL	
Current	Max operating current 1400 mA@ 3.7 V. Charging (Typical) < 15 W. Cradle BC96xx only: 150 mA @ 5 V (Operative)
Input Voltage	Host powered: 5V DC ± 5% or 10 - 30 VDC External power supply: 10 - 30 VDC ± 5%
Battery	Battery Type: Lithium-Ion: 3350 mAh Charge time @ 12 VDC: 2.5 hours to charge up to 95%, 3.2 hours to charge 100%, External Power. Barcode reads per charge: up to 80,000 RFID only reads per charge: up to 40,000
ENVIRONMENTAL	
Ambient Light	0 - 100,000 lux
Drop Resistance	Withstands 50 drops from 2.5 m / 8.2 ft @ 20 °C / 68 °F; Withstands 50 drops from 2.0 m / 6.6 ft @ -20 °C / -4 °
Trigger Resistance	Withstands 10 million hits
ESD Protection (Air Discharge)	20 kV
Humidity (Non-Condensing)	0 - 95%
Particulate and Water Sealing	IP67 and IP65; Cradle IP65 (specific models)
Temperature	Operating: -20 to 50 °C / -4 to 122 °F Storage/Transport: -40 to 70 °C / -40 to 158 °F Charging: 0 to 40 °C / 32 to 104 °F nominal; 0 to 35 °C / 32 to 95 °F ideal
INTERFACES	
Interfaces	RS-232 / USB / Ethernet and Industrial Protocols

PHYSICAL CHARACTERISTICS	
Colors Available	Black and Blue
Dimensions H x L x W	19.8 x 15.0 x 7.9 cm / 7.8 x 5.9 x 3.1 in
Display	PBT9600-DKDCRF: 1.8" OLED graphic display; Font Dimensions: User selectable.
Keyboard	PBT9600-DKDCRF: 16 Keys; Configurable
Weight	PBT9600-SRRF: 415 g / 14.6 oz, PBT9600-DKDCRF: 455 g / 16.0 oz
BARCODES READING PERFORMANCE	
Imager Sensor	SR (PBT9600-SRRF): 1280 x 800 pixels DC (PBT9600-DKDCRF): dual 1280 x 800 pixels, with color sensor
Light Source	Aiming: 630 - 680 nm VLD Illumination: White LED reading light
Print Contrast Ratio (Minimum)	15%
Reading Angle	Pitch: +/- 52°; Roll (Tilt): 360°; Skew (Yaw): +/- 52°
Field of View	38° H, 24° V
Reading Indicators	Beeper (Adjustable Tone and Volume); Datalogic's 3GL™ (Three Green Lights) technology for good-read feedback; Datalogic 'Green Spot'; Dual Good Read LEDs; Vibration.
Resolution (Maximum)	1D Codes: 3 mil; 2D Codes: 6 mil
READING RANGES	
Typical Depth of Field	Minimum distance determined by symbol length and scan angle. Printing resolution, contrast, and ambient light dependent.
Code 128 5 mils: 6.4 to 30.9 cm / 2.5 to 12.2 in 20 mils: 4 to 103.7 cm / 1.6 to 40.8 in 40 mils: 5.5 to 175 cm / 2.2 to 68.9 in EAN/UPC 13 mils: 4 to 67.5 cm / 1.5 to 26.5 in DataMatrix 10 mils: 6 to 30 cm / 2.5 to 11.8 in	
SAFETY & REGULATORY	
Agency Approvals (US/ Canada and EU)	The product meets necessary safety and regulatory approvals for its intended use. The Regulatory Addendum for this product can be referred to for a complete list of certifications.
Environmental Compliance	Complies to EU RoHS; Complies to R.E.A.C.H.
Laser Classification	Caution Laser Radiation - Do not stare into beam CDRH Class II; IEC 60825 Class 2
LED Classification	IEC 62471 LED Class: Exempt
UTILITIES	
Datalogic Aladdin™	Datalogic Aladdin configuration program is available for download at no charge.
OPOS / JavaPOS	OPOS and JavaPOS Utilities are available for download at no charge.
WARRANTY	
Warranty	3-Year Factory Warranty

ACCESSORIES

Base Stations / Chargers



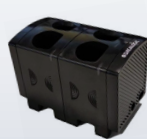
BC9620 Base station/charger USB only
BC9630 Base station/charger Multi-Interface
BC9631 Base station/charger Multi-Interface, IP65
BC9680 Base station/charger Ethernet/Profinet
BC9681 Base station/charger Ethernet/Profinet/ETH IP, IP65

Battery



RBP-PM96 Removable battery

Multi-Battery Charger



MC-P096-M2 Multi Battery Charger 2 slots
MC-P096-M4 Multi Battery Charger 4 slots
MC-P096-E2 Extension modules 2 slots

Holder



HLD-P096 Desk/Wall Holder (HLD-9600)

© 2022-2025 Datalogic S.p.A. and/or its affiliates. • All rights reserved. Without limiting the rights under copyright, no part of this documentation may be reproduced, stored in or introduced into a retrieval system, or transmitted in any form or by any means, or for any purpose, without the express written permission of Datalogic S.p.A. and/or its affiliates. • Datalogic and the Datalogic logo are registered trademarks of Datalogic S.p.A. in many countries, including the U.S. and the EU. • PowerScan, Motionix, 3GL, Datalogic STAR Cordless System and Datalogic Aladdin are trademarks of Datalogic S.p.A. and/or its affiliates, registered in many countries, including the U.S. and the EU. • The Bluetooth word mark and logos are owned by Bluetooth SIG, Inc. and any use of such marks by Datalogic Group companies is under license. • All other trademarks and brands are property of their respective owners. • Product specifications are subject to change without notice. • DS-POWERSCAN9600-RFID-EN Rev A 20250306