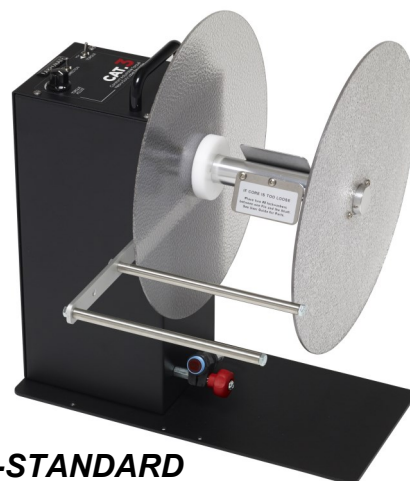


CAT-3L-STANDARD • CAT-3L-W10

The CAT-3L-STANDARD Rewinder Series is specially made for use in-line with printers that are sensitive to tension, and/or that back-feed. These Rewinders create a tensionless loop of material between the printer and the Rewinder, and only rewind when the printer prints. The depth of the loop is fully adjustable, and is controlled by an optical sensor that starts and stops the rewind action when material is printed. Optional Weighted Rollers provide additional tension control.



CAT-3L-STANDARD

Technical Specifications	CAT-3L-STANDARD	CAT-3L-W10
Max Roll Diameter (in)	12 (305-mm)	
Core Diameter (in)	3 (76-mm)	
Max Media Width (in)	6 (152-mm)	10 (254-mm)
Max Roll Weight (lbs)	15 (381-mm)	
Dimensions-HWD (in)	14 x 18 x 17 (355 x 457 x 432-mm)	14 x 18 x 19 (355 x 457 x 482-mm)
Weight (lbs)	27 (12-kg)	29 (13-kg)
Max Speed (ips)	240 (6096-mm)	
Min Speed (ips)	0.5 (12.7-mm)	
Max Torque (in-oz) ^{1,2}	183	
Max RPM ¹	388	
Number of Flanges	2	
Power Specifications ¹	120 - 220VAC in, 12VAC 40W Out	
Warranty	5 year limited warranty on Rewinder - 1 year limited warranty on Power Adaptor	
Available Options	<ul style="list-style-type: none"> • WR-170 (Weighted Roller 6") • HTO-CAT (High-Torque Option) • LTO-CAT (Low-Torque Option) • FOOTSWITCH 	<ul style="list-style-type: none"> • WR-270 (Weighted Roller 10") • HTO-CAT (High-Torque Option) • LTO-CAT (Low-Torque Option) • FOOTSWITCH

1. **HTO-CAT** increases Max Torque to 228 in-oz, Max RPM to 485, 304 ips (7,721-mm), and Power Out to 19VDC 80W. 09.2016.

2. **LTO-CAT** decreases Torque Range to 172 - 35 in-oz.