

MT-262006/TRH/A/K 902-928 MHz, 9 dBic RHCP READER ANTENNA



ELECTRICAL

| | |
|--------------------------|---|
| REGULATORY COMPLIANCE | RoHS, CE 0682 |
| FREQUENCY RANGE | 902 - 928 MHz |
| GAIN | 9dBic (min) , 9dBil (max) |
| VSWR | 1.3:1 (max) 1.4:1 (max) @ LESS THAN 10% of the range |
| POLARIZATION | RHCP |
| 3DB ELEVATION BEAMWIDTH | 63° (typ) |
| 3DB AZIMUTH BEAMWIDTH | 63° (typ) |
| SIDELOBES LEVEL @ ± 90° | -16 dB (max) |
| F/B RATIO | -18 dB (max) -20 dB (typ) |
| POWER | 6W (max) |
| INPUT IMPEDANCE | 50 (ohm) |
| AXIAL RATIO AT BORESIGHT | 4 dB (max) |
| LIGHTNING PROTECTION | DC Grounded |

MECHANICAL

| | |
|---------------------|---|
| DIMENSIONS (LXWXD) | 305x305x25mm (max) |
| CONNECTOR | Reverse Polarity TNC Female |
| WEIGHT | 1.2 kg (max) |
| MOUNTING KIT | SEE RD41191800C |
| RADOME MATERIAL | Plastic UV Resistant per ETSI 300 |
| BASE PLATE MATERIAL | Aluminum with chemical conversion coating |
| OUTLINE DRAWING | RD41880300C |
| ORIENTATION | Rectangular |

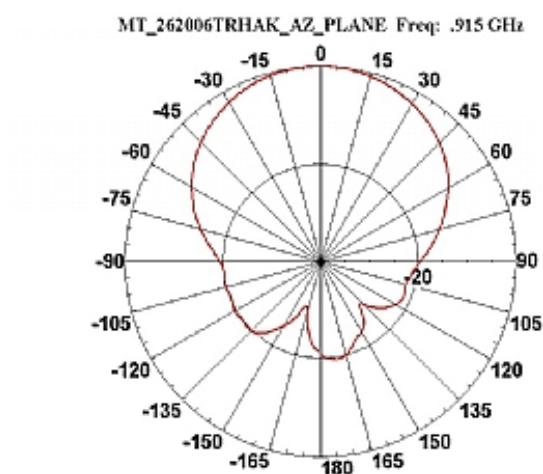
[ADD TO COMPARISON](#) | [COMPARE](#)

ENVIRONMENTAL

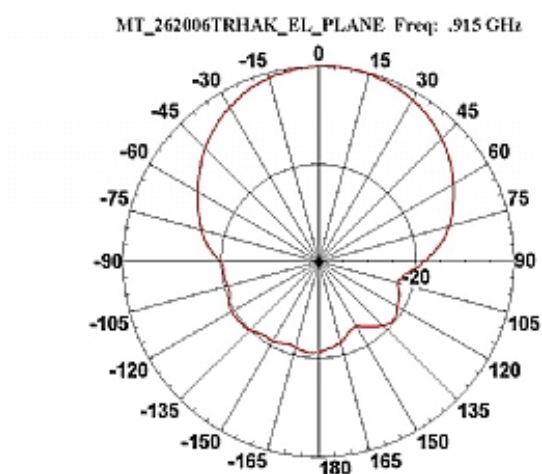
| TEST | STANDARD | DURATION | TEMPERATURE | NOTES |
|------------------|-------------|----------|-------------|----------|
| LOW TEMPERATURE | IEC 68-2-1 | 72 h | -55°C | |
| HIGH TEMPERATURE | IEC 68-2-2 | 72 h | +71°C | |
| TEMP CYCLING | IEC 68-2-14 | 4 h | 45°C < 70°C | 3 Cycles |

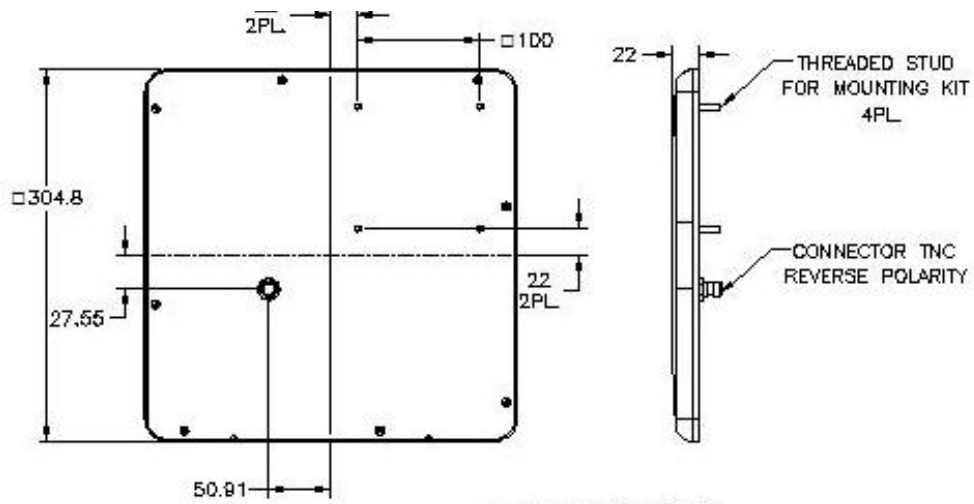
| | | | | |
|--|---------------------------------|-------|---------------|---|
| TEMP. CYCLING | IEC 68-2-14 | 10 | -45 °C +70 °C | 3 Cycles |
| THERMAL SHOCK NONO-OPERATING | | | -30°C to+70°C | Ramp 30°C/min |
| HUMIDITY | ETSI EN300-2-4 T4.1E | 144 h | | 95% |
| WATER TIGHTNESS | IEC 529 | | | IP67 |
| DUST RESISTANCE | | | | IP67 |
| SOLAR RADIATION | ASTM G53 | 1000h | | |
| OZONE RESISTANCE | ETSI 300 | | | |
| FLAMMABILITY | UL 94 | | | Class HB |
| SALT SPRAY | IEC 68-2-1 Ka | 500 h | | |
| ICE AND SNOW | | | | 25 mm Radial |
| WIND SPEED SURVIVAL OPERATION | | | | 220 Kh/m 160 Kh/m |
| WIND LOAD (SURVIVAL) : FRONT THRUST SIDE THRUST | | | | 28.6 Km 2.2 Km |
| QUASI RANDOM VIBRATION | | | | 20g rms for 4 hours |
| VEHICLE VIBRATION OPERATING | 1 grms, 10-500 Hz, in 3 axis | | | 6 hours total, 2 hr in each axis. Accelerated wear – an additional 50hrs in worst case axis. |
| MECHANICAL SHOCK OPERATING | 10g,11msec, half sine pulse | | | |

**AZIMUTH RADIATION PATTERN MIDBAND
FREQ. 0.915 GHZ**



**ELEVATION RADIATION PATTERN MIDBAND
FREQ. 0.915 GHZ**





WAIVER!

While the information contained in this document has been carefully compiled to the best of our present knowledge, it is not intended as presentation or warranty of any kind on our part regarding the fitness of the products concerned for any particular use or purpose and neither shall any statement contained herein be construed as a recommendation to infringe any industrial property rights or as a license to use any such rights. The fitness of each product for any particular purpose must be checked beforehand with our specialists.

MTI Wireless Edge Ltd.

11 Hamelacha St. Afek Industrial Park Rosh Ha'ayin 48091, Israel
 Tel: +972-3-9008900 | Fax: +972-3-9008901 | www.mtiwe.com