

**Item No. 713266 - Charging Cradle with USB-A Host Port**



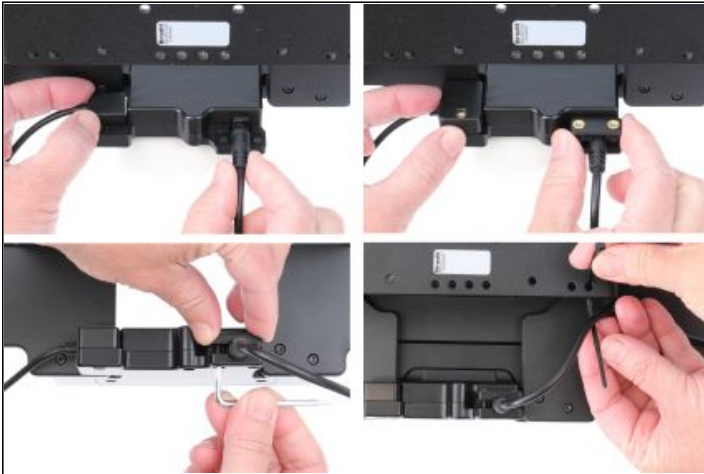
**Compatible with:**

Requires Rugged Frame with 30 Pin Connector  
Supports Expansion Back  
Scanner Accessible While Docked  
5.5mm Barrel Jack  
Zebra ET50/51/55/56 10.1"

**Important:**

Self-installation instructions and advice are provided for your convenience. It is your responsibility to determine if you have the knowledge, skills, and physical ability required to properly perform an installation. ProClip USA, Inc. shall have no liability for damage or injury resulting from the installation or use of any ProClip or third party products. It is your responsibility to ensure that all products are installed in adherence with local laws and regulations and in such a manner as to allow a vehicle to be operated safely and without distraction. ProClip USA, Inc. product warranties do not cover the installation, removal or re-installation of any product.

**Attention:** Carefully read all instructions and review the images before installing this product.



**1. Power and USB Cabling**

This cradle includes retention clips to ensure the power and USB-A cables cannot be accidentally removed. Plug in the cable, and then place the retention clip with brass inserts over the top of the cable. Use the included fasteners to secure the clip. The included zip ties can be used with the included holes in the steel base plate to manage cables and keep them secure.



**2. Mounting the Cradle:**

This cradle features the AMPS and VESA75 hole pattern in the steel base plate. AMPS is common for many ball and vehicle mounts and VESA75 is common in telecommunications and office environments. The Included M4 Fastener pack provides several lengths of fastener, two types of washer and lock nuts to ensure a good fit to your chosen mount.



**3. Docking:**

Place the lower part of the device in the cradle, then press the top middle so it snaps into place under the top arm.

**Undocking:**

Press upwards on the upper part of the cradle, at the same time pull the upper part of the device out from the cradle and then lift the device up and out from the cradle.



**4. Installation Information:**

The included M4 Fastener Pack has 10, 14 and 20 mm Low Profile 2.5 mm Hex head machine screws, M4 Lock Nuts, Flat Washers, Lock Washers and a 2.5mm Allen Wrench.

## Returns

All returns must be made within thirty (30) days of the delivery date and include proof of purchase, a copy of your original order, or invoice. No products shipped hereunder may be returned without ProClip USA's prior approval. In order to return a product, the buyer must obtain an RMA number (Return Merchandise Authorization Number). **Items returned without a valid RMA number may be rejected. Items that are open, used, damaged, or returned without all original components may have a restocking fee applied.**

## Limited Warranty and Liabilities

ProClip warrants that the Products will be free of defects in materials and workmanship for a period of one (1) year from the date of purchase. If any Product should become defective within the warranty period, ProClip, at its option, will replace it, repair it or refund the purchase price. Repair or replacement parts or Products will be furnished on an exchange basis and will either be new or reconditioned. All replaced Products shall become the property of ProClip. Warranty service is available to you by delivering the Product during the warranty period to the company it was purchased from or to ProClip at 4915 Voges Rd., Madison, WI 53718 USA and providing proof of purchase, price and date. If shipped to ProClip, the buyer must first call ProClip at +1 800-296-3212 or e-mail ProClip at [returns@proclipusa.com](mailto:returns@proclipusa.com) to obtain a return approval and return number. You will bear all shipping, packaging and insurance costs and all other costs, excluding labor and parts, necessary to effectuate repair, replacement or refund under this warranty. For more information on how to obtain warranty service, write, e-mail or telephone ProClip at 4915 Voges Rd., Madison, WI 53718 USA. Tel: +1 800-296-3212, e-mail: [returns@proclipusa.com](mailto:returns@proclipusa.com).

THIS LIMITED WARRANTY DOES NOT EXTEND TO ANY PRODUCT WHICH HAS BEEN DAMAGED AS A RESULT OF ACCIDENT, MISUSE, ABUSE OR AS A RESULT OF UNAUTHORIZED SERVICE. THIS WARRANTY IS IN LIEU OF ALL OTHER EXPRESS WARRANTIES FOR THIS PRODUCT. IMPLIED WARRANTIES, INCLUDING THOSE OF MERCHANTABILITY, FITNESS FOR A PARTICULAR PURPOSE AND NON-INFRINGEMENT SHALL HAVE NO GREATER DURATION THAN 1 YEAR FROM THE DATE OF PURCHASE. IN THE EVENT THIS PRODUCT BECOMES DEFECTIVE DURING THE WARRANTY PERIOD, THE PURCHASER'S EXCLUSIVE REMEDY SHALL BE REPAIR, REPLACEMENT OR REFUND AS PROVIDED ABOVE. IN NO EVENT SHALL PROCLIP BE LIABLE FOR INCIDENTAL OR CONSEQUENTIAL DAMAGES, INCLUDING WITHOUT LIMITATION LOSS OF PROPERTY, ARISING FROM BREACH OF ANY EXPRESSED OR IMPLIED WARRANTY. PROCLIP DISCLAIMS ALL WARRANTIES, EXPRESS OR IMPLIED, OTHER THAN THOSE SET FORTH ABOVE. IN NO EVENT WILL PROCLIP BE LIABLE TO YOU OR ANY THIRD PARTY FOR ANY INCIDENTAL OR CONSEQUENTIAL DAMAGES, INCLUDING, WITHOUT LIMITATION, INDIRECT, SPECIAL, PUNITIVE, OR EXEMPLARY DAMAGES, INCLUDING ATTORNEY FEES ARISING OUT OF THE USE OF OR THE INABILITY TO USE THE PRODUCTS, OR FOR ANY CLAIM BY ANY OTHER PARTY, EVEN IF PROCLIP HAS BEEN ADVISED OF THE POSSIBILITY OF SUCH DAMAGES.

**Regulatory information:** [www.proclipusa.com/regulatory.html](http://www.proclipusa.com/regulatory.html)