



SharkFin 3-in-1 Series

Roof Mount Antennas

The SharkFin style, 3-in-1 vehicular roof mount antennas from RFMAX combine high-performance at an economical price point. These models combine three separate holes in your vehicle roof. This antenna is the perfect alternative to combination antennas from other vendors... you no longer have to worry about lead time and high prices - you've found RFMAX!

From a technical standpoint, these antennas offer superior performance for the following three brands: 1575 MHz active GPS (3 or 5 volt) 698-2700 MHz 3g/4g/LTE cellular and 2.4 / 5 GHz with threaded stud and adhesive mounting, there isn't much these antennas can't do. Thousands of these antennas have been deployed around North America on commercial vehicles, including:

- Electric, gas, and cable TV utility vans and trucks
- Local police, County sheriff & State Trooper cruisers
- Fire department trucks & ambulances
- Taxi Cabs, livery vehicles & limousines

Designed to pair with many of today's most popular mobile cellular modems and gateways, including: Sierra Wireless / AirLink: GX440, GX450, LS300, MP70, Raven RV50. Cradlepoint: CBA750b-LPE, CBA850LPE, IBR650LPE, MBR1400LPE. CalAmp: 140-9324-000, 140-9324-100 & Peplink: MAX-BR1-ENT-LTE



ELECTRICAL DATA

Frequency [MHz]	Cable 1 (3g/4g/LTE)	698-960/1710-2170/2300-2700
	Cable 2	2400-2485/5150-5875
	Cable 3	1575.42
VSWR	698-960/1710-2170/2300-2700	2.5:1
	2400-2485/5150-5875	2.0:1
Gain [dBi]	698-960/1710-2170/2300-2700	4.5
	2400-2485/5150-5875	6.5
Polarization	698-960/1710-2170/2300-2700	Linear Vertical
	2400-2485/5150-5875	Linear Vertical
Power Rating [W]	698-960	100
	1710-2170	20
	2400-5875	20

ENVIRONMENTAL DATA

Operating Temperature [°C]	-40 / +85
Storage Temperature	-40 / +85
Relative Humidity MIL-STD810G, method 507.4 @ 30°[%]	93
Military Spec	MIL-STD 810 conformance to vibration

LNA DATA

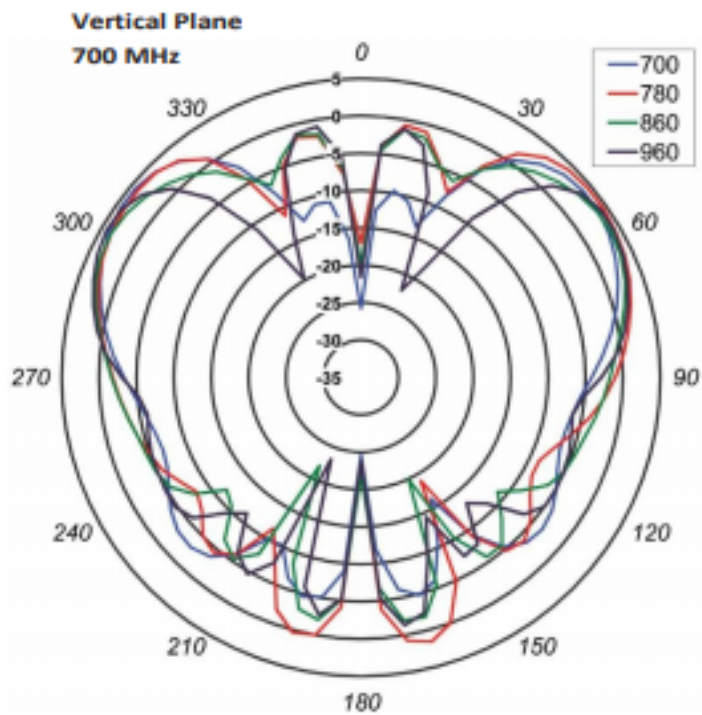
Gain [dBi - 3.3 V]	28
Gain [dBi - 5V]	30
Voltage [VDC]	3.3 OR 5

MECHANICAL DATA

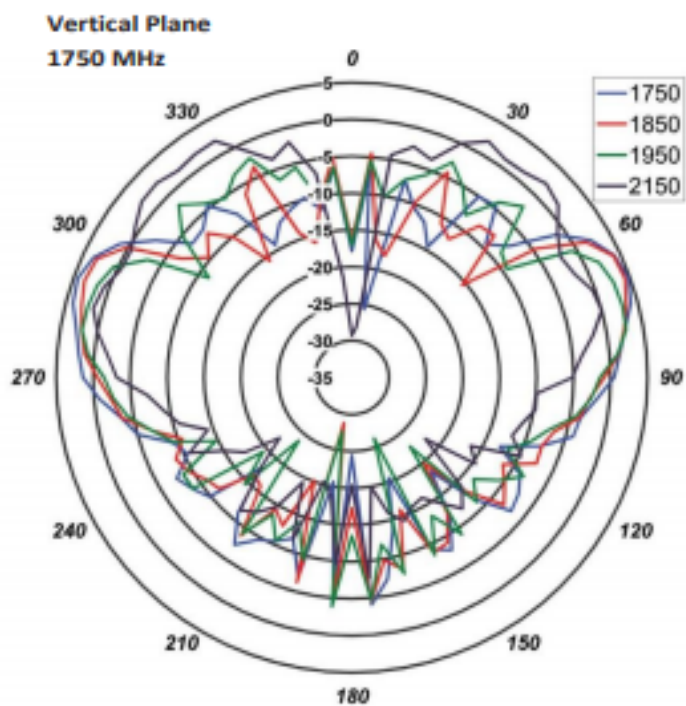
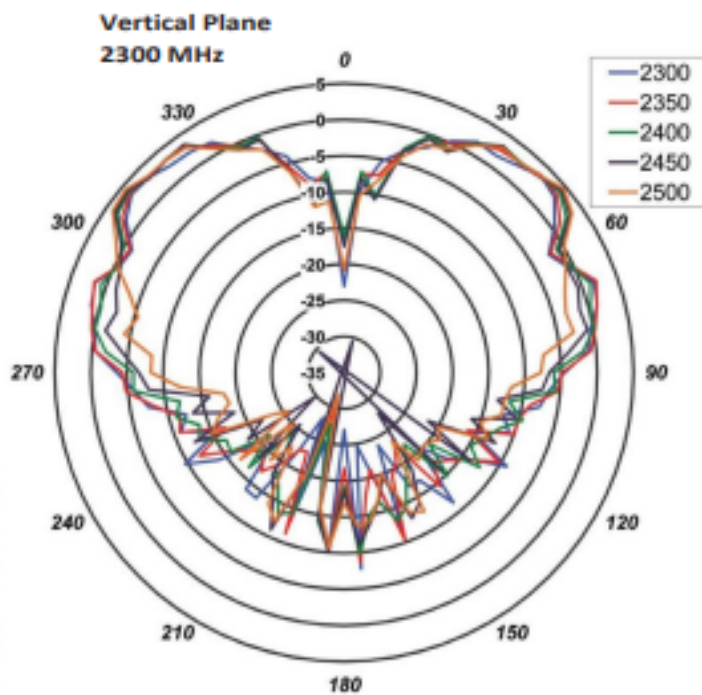
Color	Black or White
Ingress Progress	IP 65
Weight [oz/g]	15/470
Dimensions [in/m]	3.5 H X 4.26 D / 88.3 X 108
Mounting Hole [in/mm]	0.76 / 19.3
Direct Mount Stud [in/mm]	1.0 L x 0.75 D / 25.4 x 19
Adhesive Mount [in/mm]	4.26 / 108 3M Adhesive

P/N	Frequency	Cable Type	Cable Length (feet/meters)	Model	Connector
RSF-DB-G4W-SSS	698-960/1710-2170/2300-2700/2400-2485/5150-5875/1575.42	RG-58 RG-58 RG-174	17 / 5.18 17/518 17/5.18	DB	SMA Male SMA Male SMA Male
RSF-DB-G4W-TTT	698-960/1710-2170/2300-2700 2400-2485/5150-5875 1575.42	RG-58 RG-58 RG-174	17 / 5.18 17 / 5.18 17 / 5.18	DB	TNC Male, TNC Male, TNC Male
RSF-AW-G4W-SSS	698-960/1710-2170/2300-2700 2400-2485/5150-5875 1575.42	RG-58 RG-58 RG-58	17 / 5.18 17 / 5.18 17 / 5.18	AW	SMA Male SMA Male SMA Male

Roof Mount Antennas



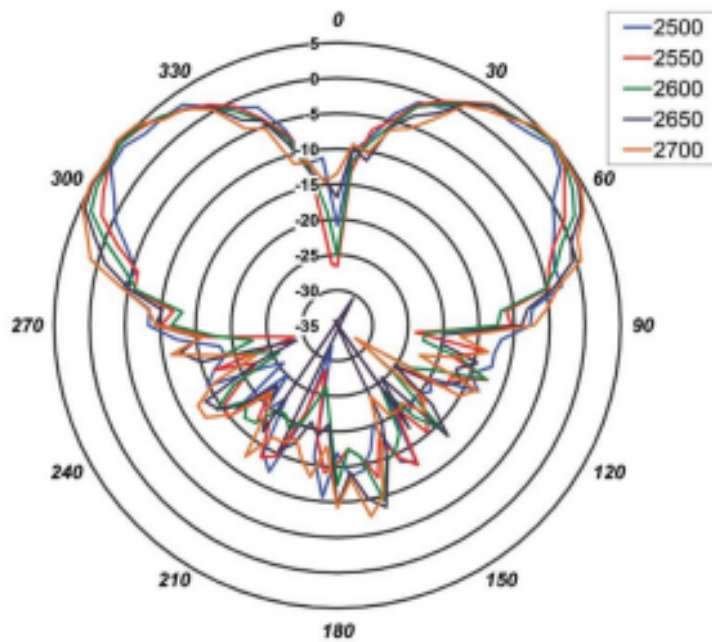
Radiation Patterns



Roof Mount Antennas

Radiation Patterns

Vertical Plane
2500 MHz



Vertical Plane
5150 MHz

