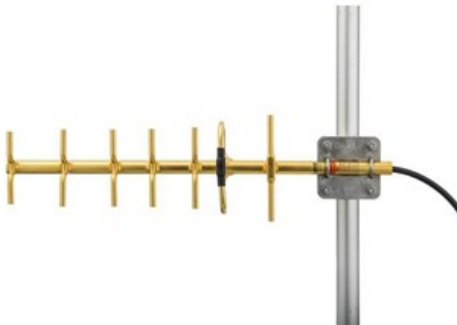


RY900-12-7-SNF-19

900 MHz, 7 Element Yagi Antenna

RFMAX

Series: Yagi



RFMAX' S directional Yagi antennas are either fully gold, or fully black, anodized for corrosion resistance. All UHF and above frequency antennas feature internal matching to assure broad bandwidth and resistance to severe weather conditions. There is no gamma match to ice up, corrode or detune. Our engineering staff has optimized the product family for forward gain by computer analysis and then field-tested each for conformance.

Features:

- Feature 360° welds around each element and an end-of-boom N connector feed with an internal transmission line feeding the driven element.
- Every Yagi is tuned on a network analyzer for best power match and lowest VSWR.
- All Yagi antennas ship complete with a high quality cast aluminum mounting kit that includes stainless steel hardware and allows vertical or horizontal orientation during installation.
- The antenna has an ingress protection rating of IP67.
- 5 Year Warranty

Applications:

- Point-to-point and multi-point / directional outdoor antennas applications used by private organizations and government agencies around the globe.
- Typical applications include transportation such as LORA & ISM railroad switching, remote locations reporting examples that include oil fields, weather conditions and, meter data transmissions for utilities.

www.rfmax.us
info@rfmax.us

www.rfmax.us

Rev. 01/2018



RY900-12-7-SNF-19

900 MHz, 7 Element Yagi Antenna



Series: Yagi

PARAMETER	SPECIFICATIONS
Model Number	RY900-12-7-SNF-19
Frequency Range	880 – 960 MHz
Peak Gain, dBi (Max)	12.2
VSWR, Max	< 1.5:1
Nominal Impedance	50Ω
Polarization	Linear
Azimuth 3 dB Beamwidth	54°
Elevation 3 dB Beamwidth	47°
Front-to-Back Ratio	20 dB
Max Power (Ambient 25°C)	200 Watts
Antenna Dimension (LxWxT)	610 x 168 x 79 mm (24.0" x 6.61" x 3.11")
Cable Type, Exposed Length	RG213, 48.8 cm (19.2 in)
Connector	Type N, female
Weight	0.68 kg (1.5 lbs.); w / brackets 1.37 kg (3.02 lbs.)
Wind Operational	160 km/h (100 mph)
Wind Survival	220 km/h (136 mph)
Operating Temperature	-30°C to +70°C
Storage Temperature	-40°C to +85°C
Ingression Protection	IP67



RY900-12-7-SNF-19

900 MHz, 7 Element Yagi Antenna

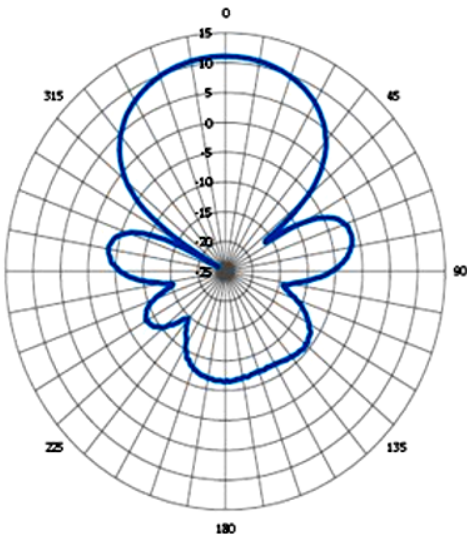


Series: Yagi

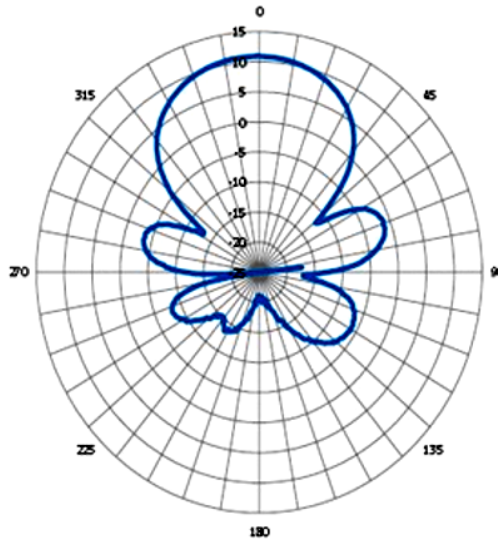
RADIATION PATTERNS

AZIMUTH PATTERNS

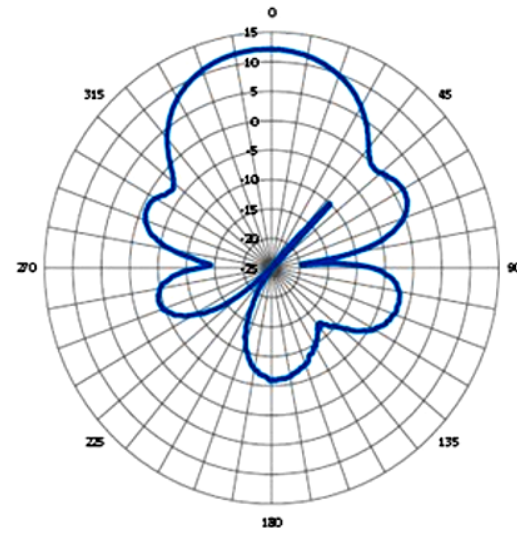
890 MHz



925 MHz



960 MHz



ELEVATION PATTERNS

