

ALL-PURPOSE MOUNT KIT FOR S9025 ANTENNAS

The All-Purpose Mount is an articulating mount for use with RFMAX 5"x5" RFID "Mini Panel" Antennas. This mount kit is specifically designed to provide a wide range of articulation and flexibility in both the azimuth and elevation planes. The mount may be used on any vertical wall or mast up to 2 inches in diameter. For best results, mount the antenna near the center of the coverage area. A line-of-sight path between the antenna and active floor locations generally works best. Although 900MHz RFID signals penetrate cubical dividers and interior walls with little attenuation, reinforced block walls, banks of metal cabinets or steel shelving may attenuate signals or cause multipath conditions where reflected signals interfere with the primary signal path.

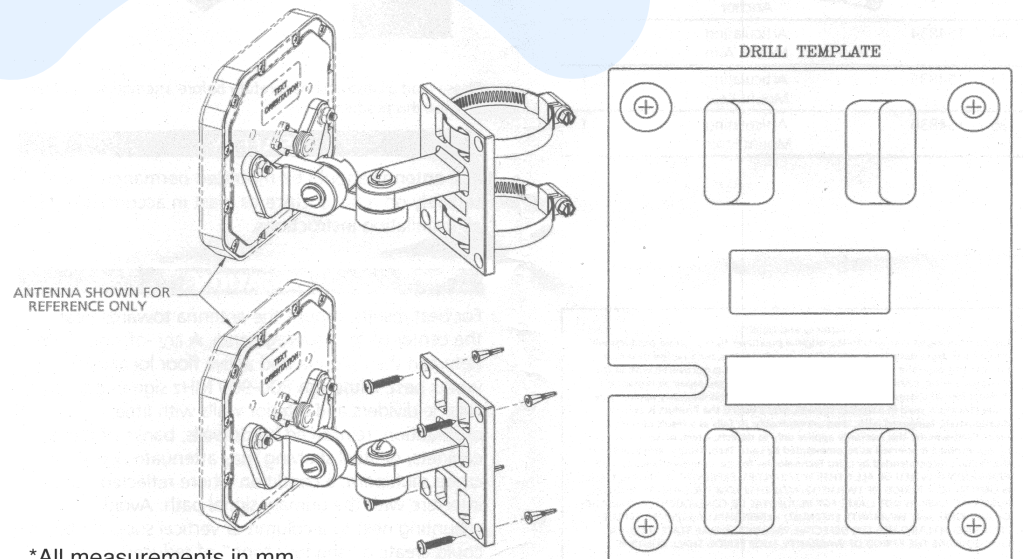
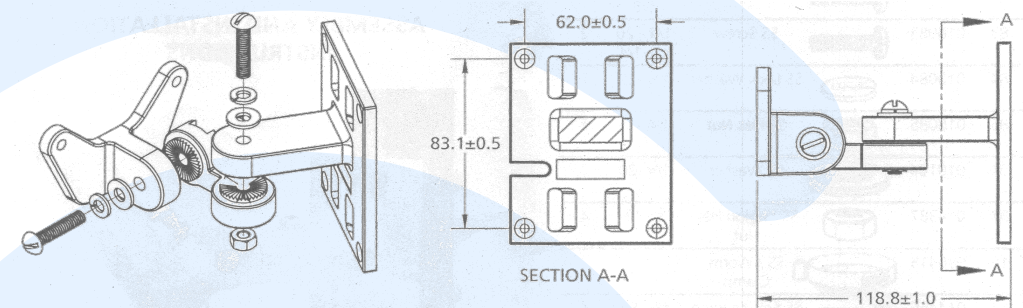
FEATURES

- Allows the antenna to articulate, resulting in better coverage pattern
- Can be mounted on any vertical wall or mast up to 2 inches in diameter, depending on the model

MARKETS

- Available for all the "Mini" S9025 series antennas
- Fixed flush-mount brackets are also available

PART NUMBER	DESCRIPTION
ALLPMTE-001	All purpose articulating mounting bracket - Black
ALLPMTE-002	All purpose articulating mounting bracket - White



*All measurements in mm.